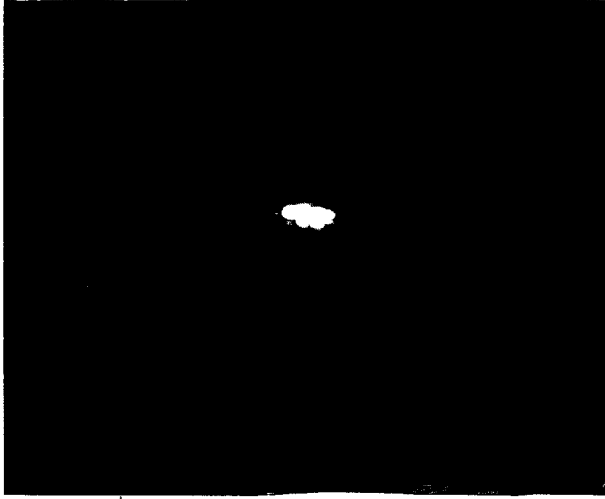


111

19:17

SC-R0-31 or Energy Spread 調整.

SUB A = 97.5 → 96° 5h
B = 97.5 → 96°



19:21

027 - Wire Scan.

09/05/2004 19:27:41

Wire Screen Optics Calculator Matching

X phase space of Wire A X phase space of Matching Point

Results of Measurement

R_x [mm]	276.807	R_y [mm]	32.751
σ_x [mm]	12.174	σ_y [mm]	250
ϵ_x [mm]	47420E-0	ϵ_y [mm]	3.8467E-6
y_c [mm]	74230	y_c [mm]	61372
dmag x :	6.778	dmag y :	1.077
dsmag x :	2.8604E-6	dsmag y :	4.6246E-6
ycsmag x :	466.606	ycsmag y :	72.405

Optics Plot

Wire Selection

3-wire:ABC 3-wire:ABD 3-wire:ACD 3-wire:BCD
4-wire:ABCD

Err(mass), no n: 0 Err(opt) (%): 0

Calculate Optics Save All Parameters

Output values were saved to Matlab/KEKB/Wire/LLINGSector5/KEYData/OutputName_2004_9_5_19_27_14.dat

PH Three Wire Linear E-sector KEKB

09/05/2004 19:27:41

Wire A Wire C

ChiSquare = 147812. Goodness = .9929

sigma1 = 38621 +/- 34696	sigma2 = 29959 +/- 43056	sigma3 = 43785 +/- 874	sigma4 = 39299 +/- 36979	sigma5 = 32312 +/- 85411	sigma6 = 24443 +/- 614
alpha1 = 19780 +/- 11278	alpha2 = 29174 +/- 11891	alpha3 = 13911 +/- 111	alpha4 = 11881 +/- 13245	alpha5 = 44981 +/- 11825	alpha6 = 42424 +/- 181
beta1 = 26.5491 +/- 11.128	beta2 = 46.3572 +/- 18734	beta3 = 71.8889 +/- 186	beta4 = 52.3848 +/- 16443	beta5 = 47.3238 +/- 37048	beta6 = 71.8117 +/- 634
b1 = 134.844 +/- 4.48877	b2 = 139.228 +/- 7.48829	b3 = 134.131 +/- 7.134	b4 = 88.2213 +/- 8.8974	b5 = 124.499 +/- 4.91178	b6 = 225.134 +/- 4.379
a1 = 16.3858 +/- 1.38815	a2 = 16277 +/- 15241		a4 = 10.8894 +/- 1.13999	a5 = 1.6757 +/- 0.1006	

File: WS2004_9_5_19_27_35.081A File Pref Refit -548.7314463125 V File: WS2004_9_5_19_30_28.datC File Pref Refit -548.7314463125 V

Wire B Wire D

ChiSquare = 461322. Goodness = .9928

sigma1 = 46236 +/- 1887	sigma2 = 42518 +/- 81232	sigma3 = 24994 +/- 499	sigma4 = 24999 +/- 22827	sigma5 = 49232 +/- 8947	sigma6 = 42882 +/- 499
alpha1 = 28482 +/- 18459	alpha2 = 22287 +/- 87118	alpha3 = 16798 +/- 827	alpha4 = 26291 +/- 29714	alpha5 = 72281 +/- 21415	alpha6 = 84980 +/- 168
beta1 = 31.3866 +/- 8.923	beta2 = 43.9928 +/- 47187	beta3 = 76.2374 +/- 428	beta4 = 26.2143 +/- 72641	beta5 = 48.1982 +/- 16382	beta6 = 76.2218 +/- 461
b1 = 237.812 +/- 14.2994	b2 = 495.164 +/- 15.3541	b3 = 716.238 +/- 17.16	b4 = 17.1889 +/- 2.52727	b5 = 32.4448 +/- 4.80854	b6 = 20.8429 +/- 5.843
a1 = 14.3888 +/- 2.26441	a2 = 16277 +/- 15241		a4 = 24.9894 +/- 77683	a5 = 1.6668 +/- 0.1005	

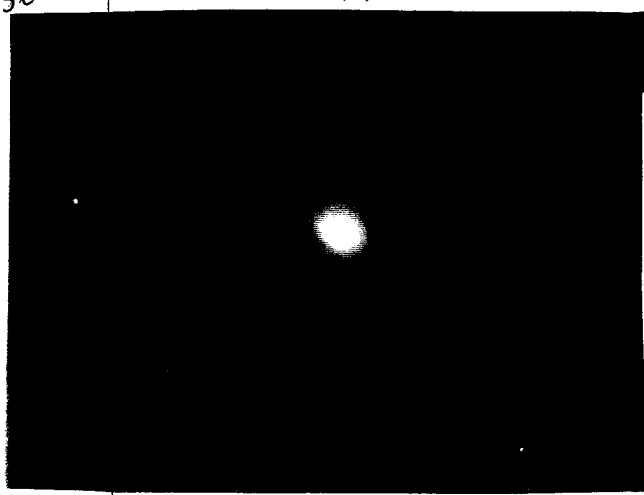
File: WS2004_9_5_19_28_23.datB File Pref Refit -548.7314463125 V File: WS2004_9_5_19_32_20.datD File Pref Refit -548.7314463125 V

19:36

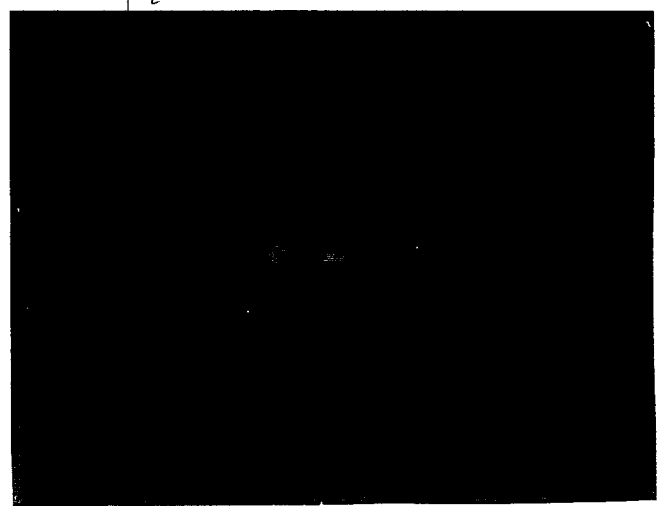
SC-61-H. 調整前

FB C11-4

$\phi = 98^\circ$

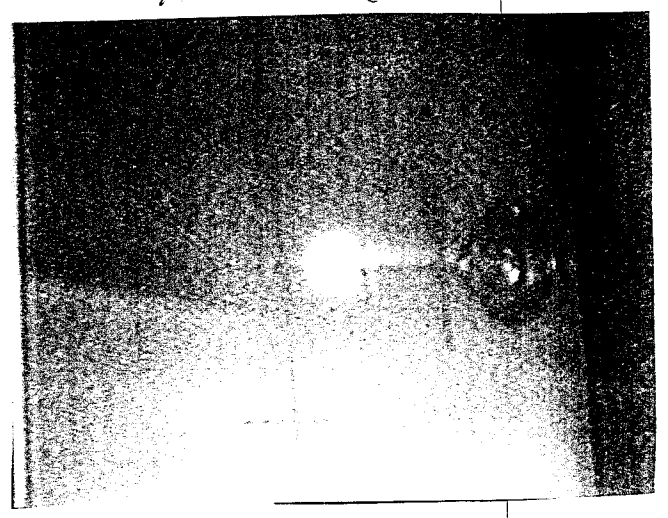
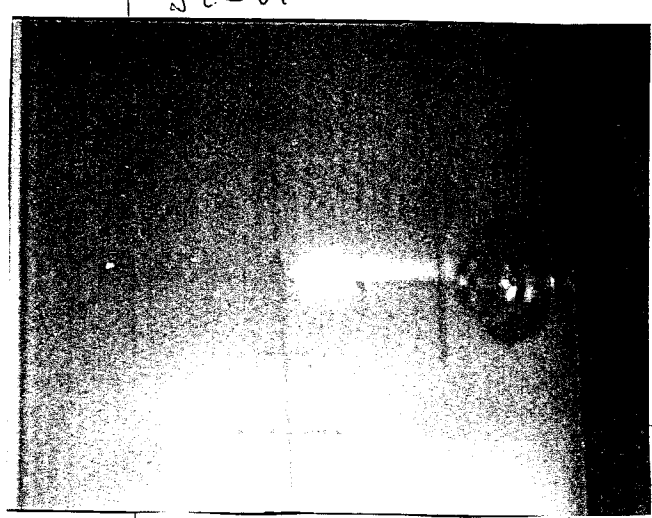


SC-61-A1



SC-61-A2

$\phi = 98.5^\circ (-3.5^\circ)$

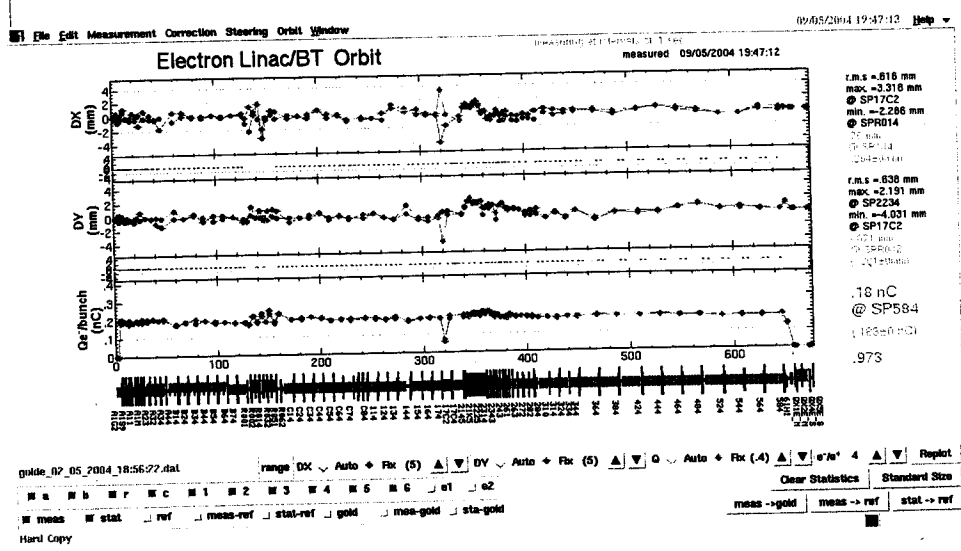


NC-61-A3

調整後



IP=89



23:15

4-1 Phase shifter 故障

4-1 E STBK

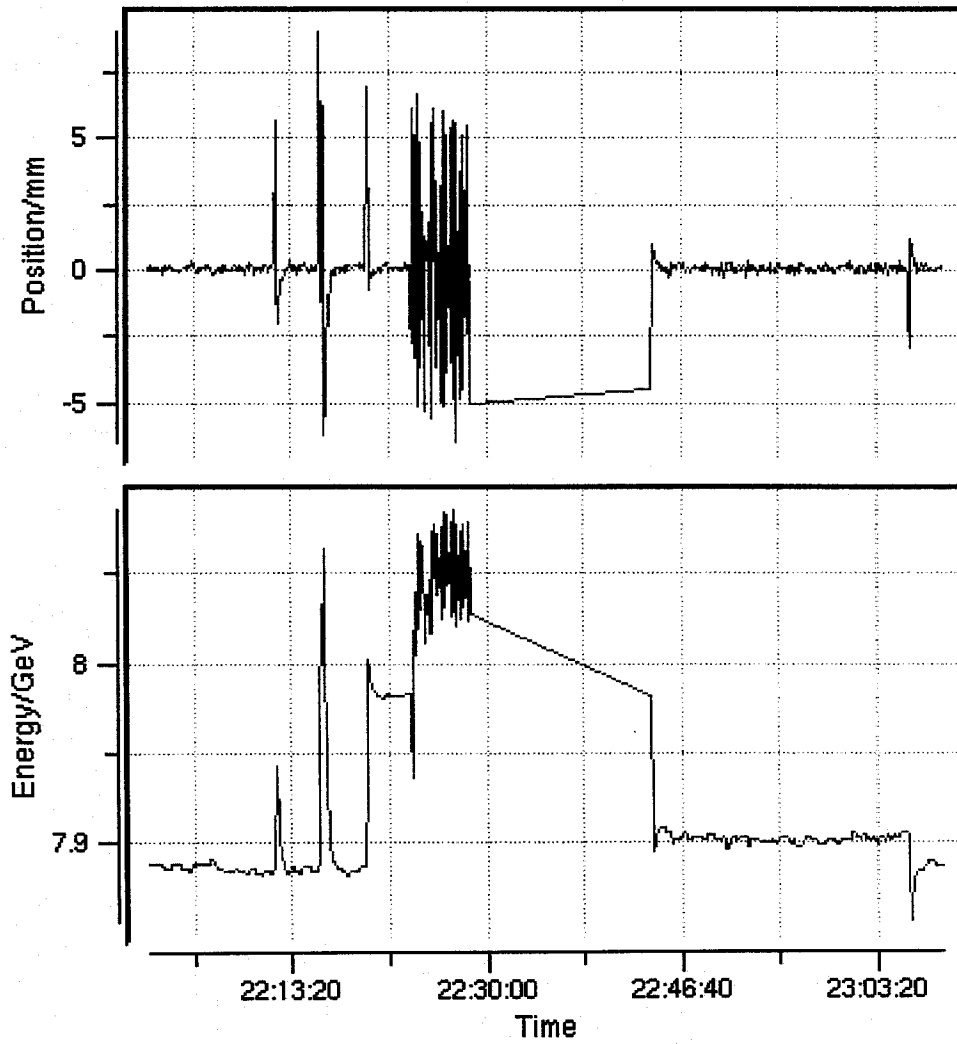
2-2 E ACCL

↓

4-1 調整後

4-1 ACC
2-2 STB

に異常

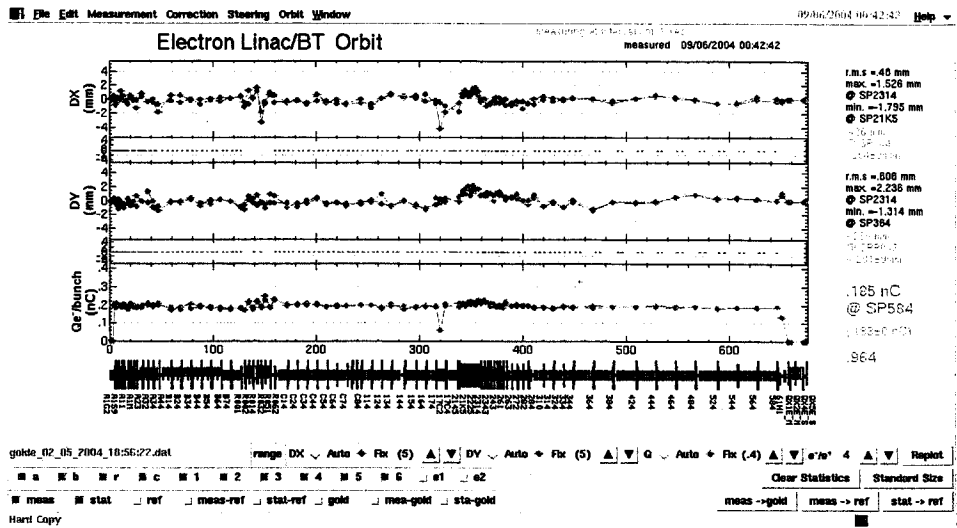


Drag Button-1 to Zoom Graph

Clear Half

Clear Data

9/6 0:42



0:47

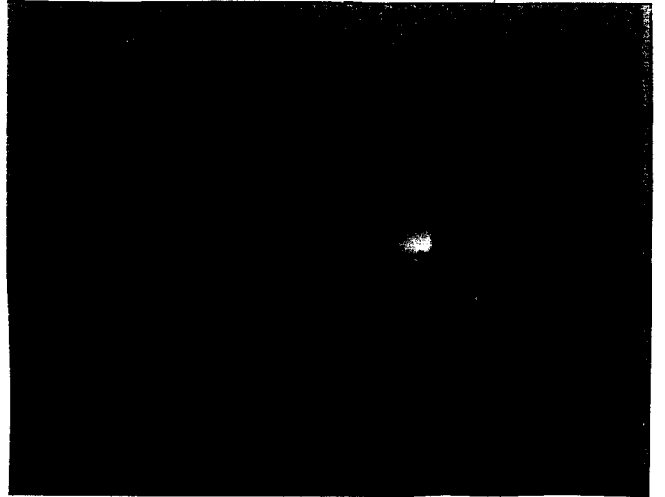
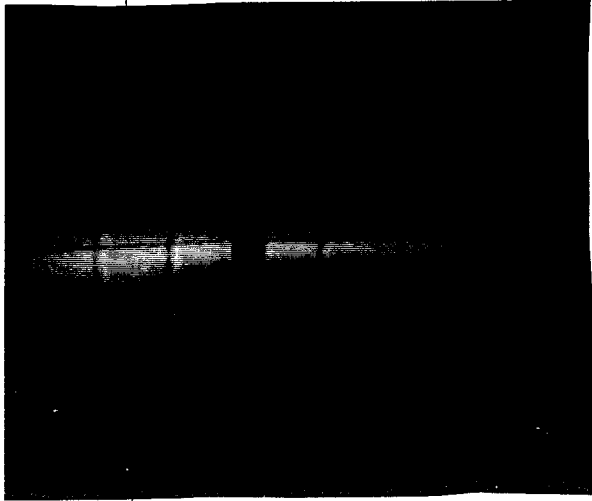
现在 $\approx 115 \times -7 \times 10^{-7}$ ($e^{-0.2nC}$ channeling)

data 3807.all

data 1457.phase.all

data 226.mode.all

INC 調整 (Kekb e- E042)



SC-61-A1

SB C~4 95°

→ 90.5°

SC-61-A2
SB調整後
→



SC-61-A3の裏側にC357k.

BS-61-A3 10A → 0A

~~BS-61-A2 9.98A → 1.702A~~

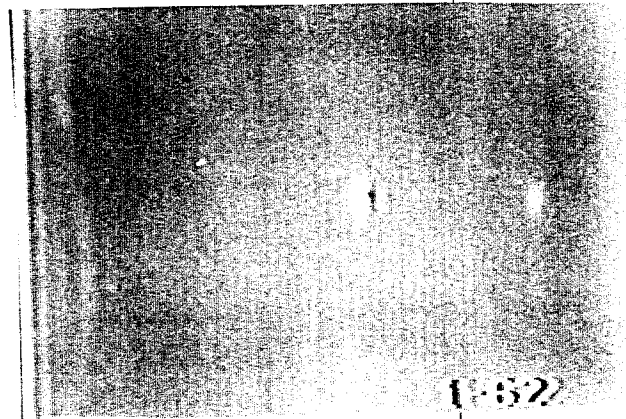
BS-61-A2 -9.98A → -1.702A

Achromatic 125387k

RF-61-A1 8.368 → 8.504

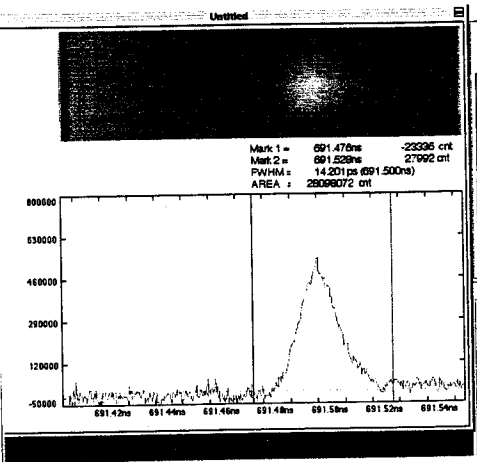
AD-61-A1 8.000 → 8.000

SC-61-A4 E0425.



E042

AI 241-7



Measurement condition

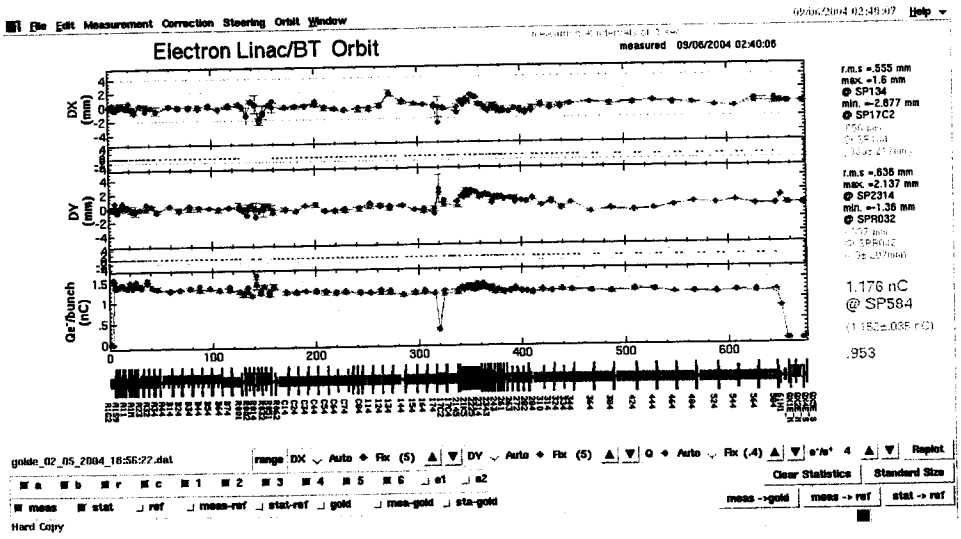
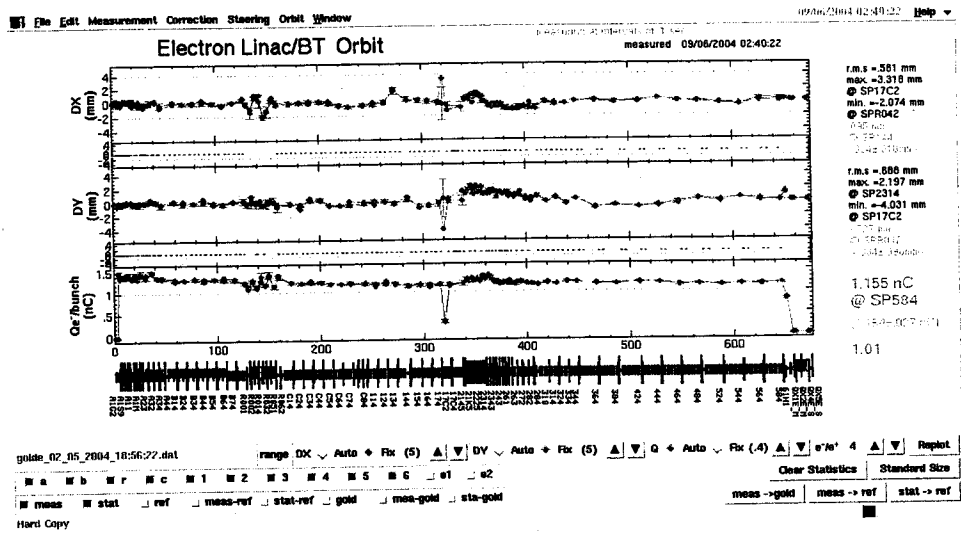
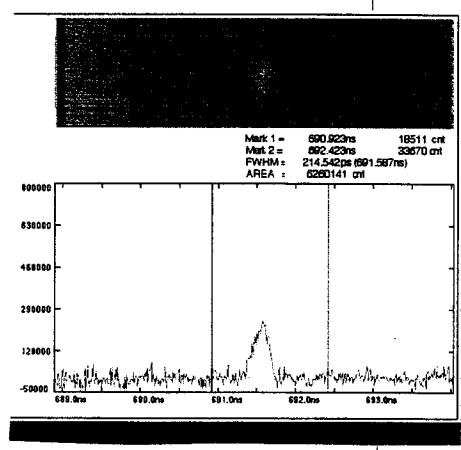
Live Time: 10 pulse
 Accum. Time: 150 pulse

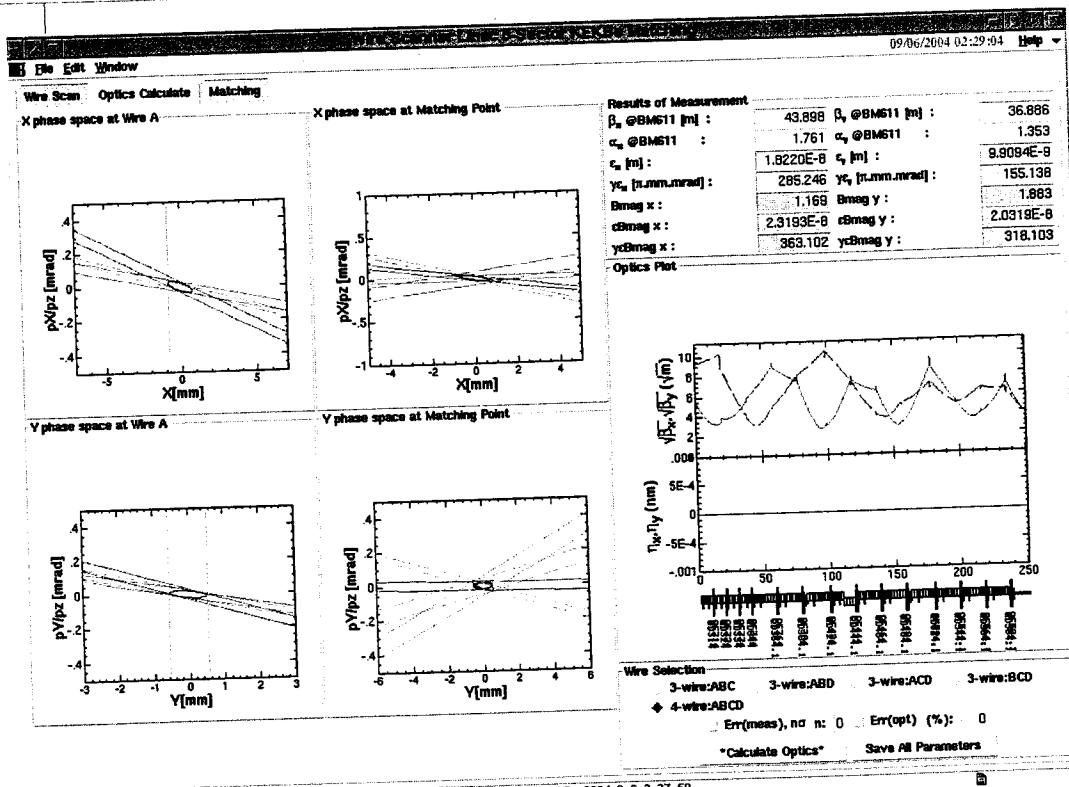
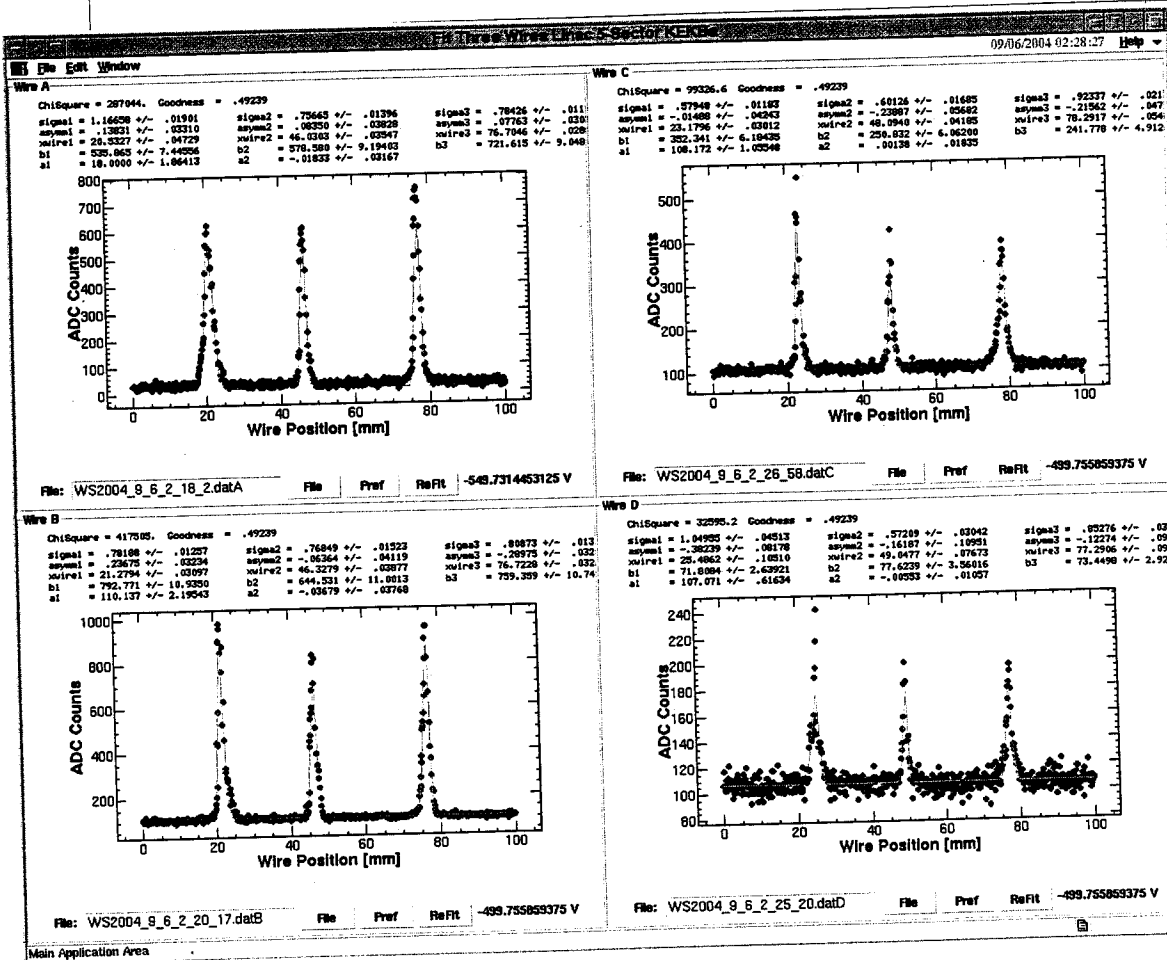
Control the Streak Camera
 μ -Sweep Range: 6.2ns

MCP Gain: 90 %
 Delay: 551.45 ns

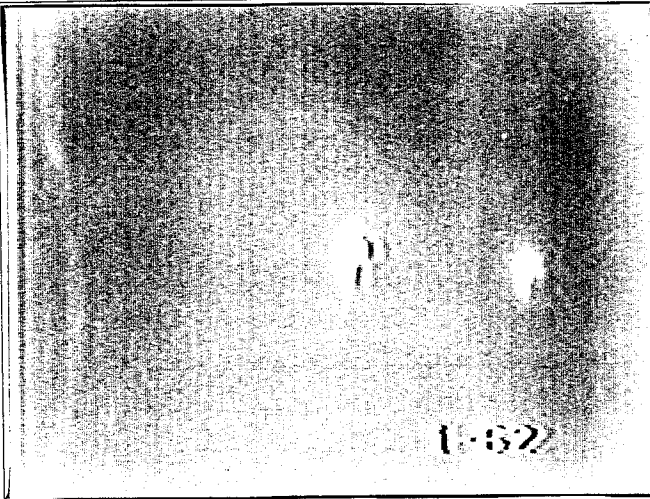
Input Optics
 Faces: open
 Slit Width: 100 μ m

Condition: BeamC6699_A1
 Accum. Time: 150 pulse
 Mcp Gain: 90 [%]
 Streak Mode: 0.28 [NS]
 Streak Trigger SINGLE
 R: -0.180 V; 0.558 Z; 4.8998
 DC Calibration ON
 DATE 2004:09:06
 TIME 02:09:25
 Comment: (No Filter)





All informations are SAVED to /data1/KEKB/Wire/LINAC/sectors/KEKBe/data/MatchResult/WLS0e_2004_9_6_2_27_50



SC-61-A7

9/6
6:20

現行 125x-7-E (e⁻ inc. channeling)
 BT: data 3809.all
 Phase: data 1460.phase.all
 Mode: data 228.mode.all
 125-7"

e⁻ 0.2nC channeling
 BT : data 3807.all
 Phase : data 1457.phase.all
 Mode : data 226.mode.all

e⁻ 2nC channeling
 BT : data 3805.all
 Phase : data 1455.phase.all
 Mode : data 225.mode.all

7:30

channeling
~~125-7~~ 3