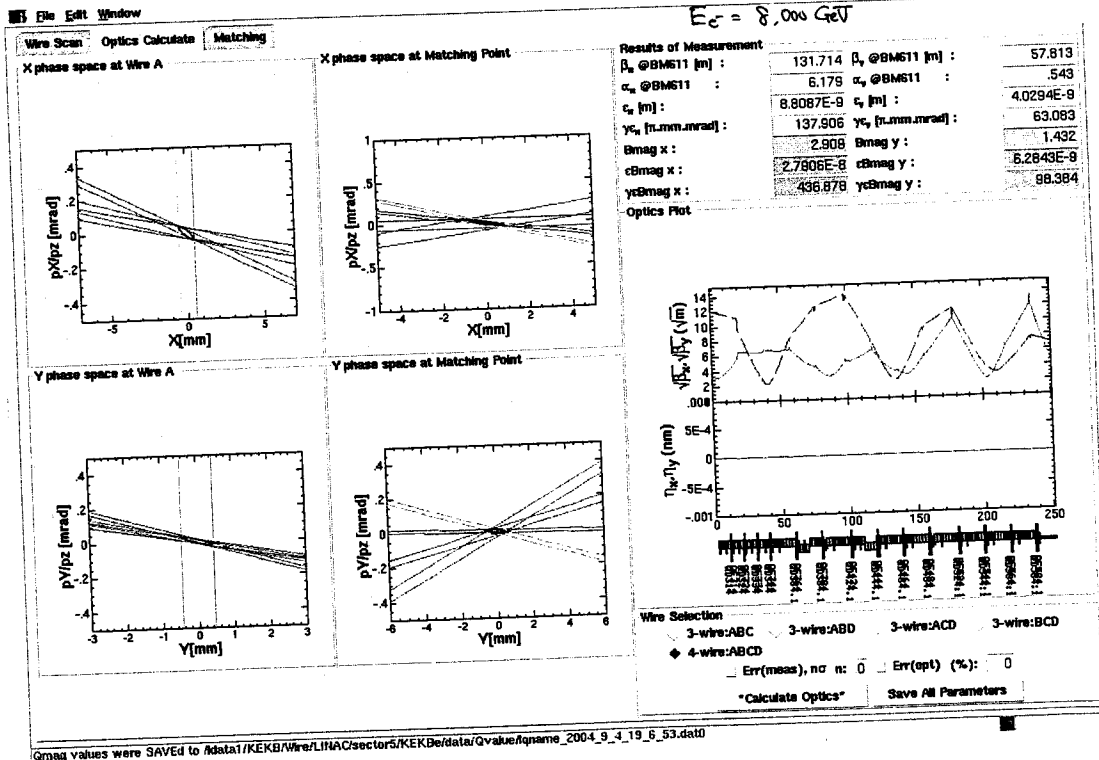


Hard Copy



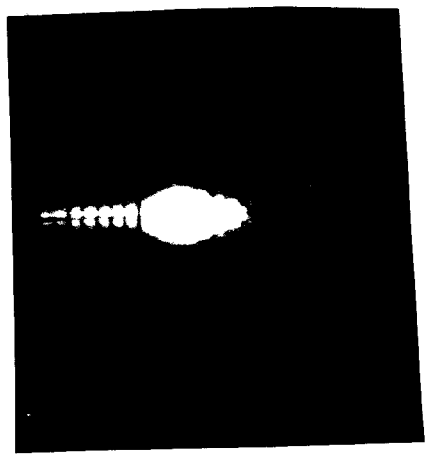
20-05

BTdata SAVE = (3802)

2nd E-G 準備

② Gun Parameter Load (KEKBe 用) #9  
 ① Gun bias = ~~544.0V~~ 454.7V → ( 351.0V )  
                   ~~744.0V~~ 0.94p                   ( 0.724 )  
                   ~~33.8~~ 294.9V                   ( 227.3V )

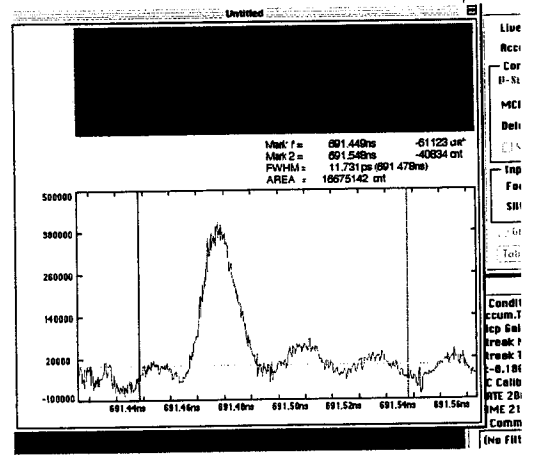
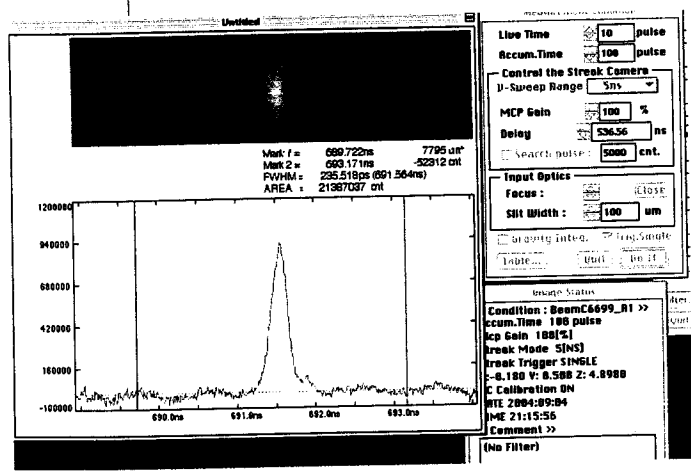
- ② BPM ホールの レジ変更
- ③ 軌道補正



④ SB-A 97.5° → 92.0°  
 SB-B 97.5° → 92.0°  
 $Z \frac{dE}{E}$  at SC-R0\_31  
 エレックレ

21:12

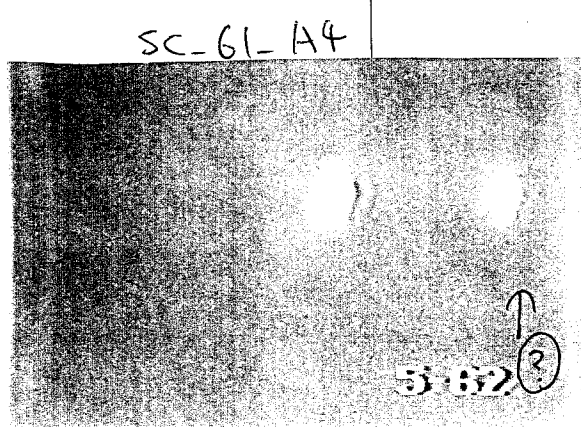
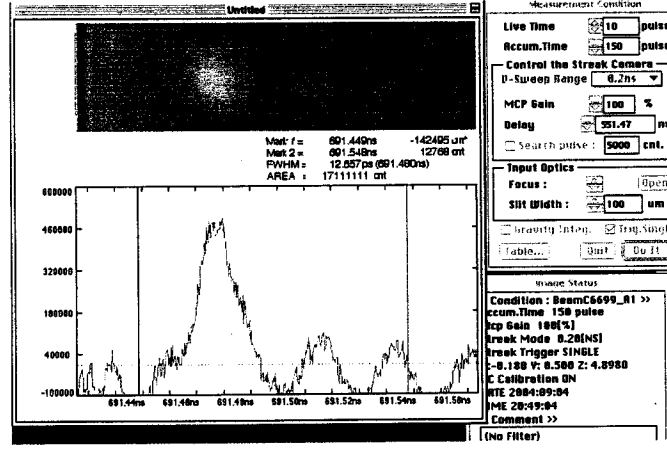
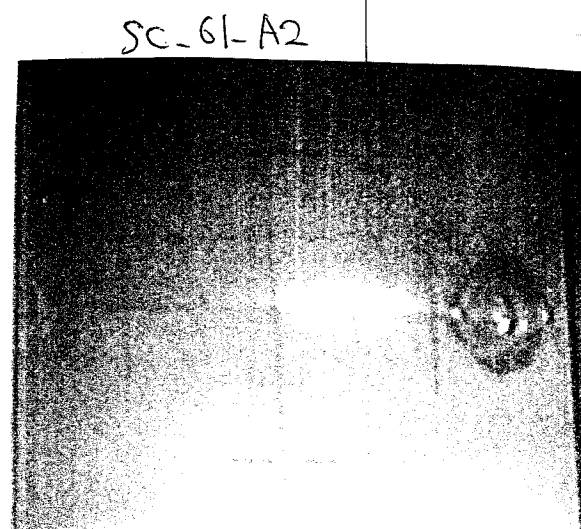
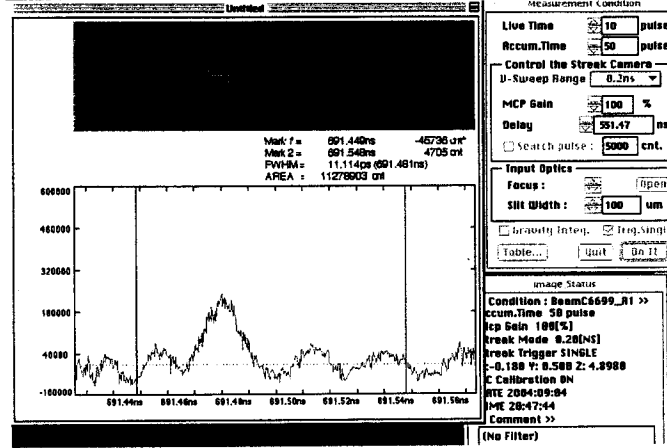
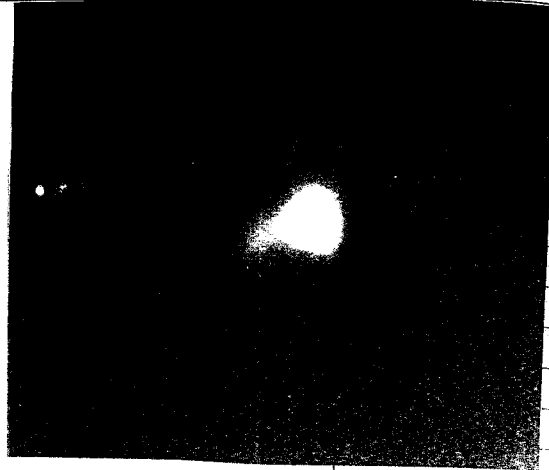
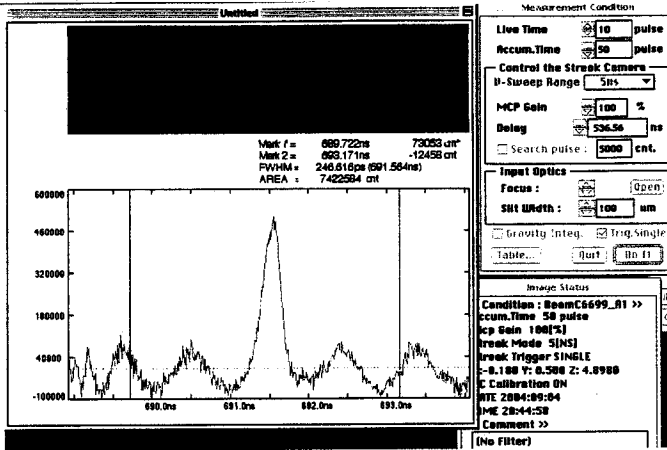
⑤ ZH-4



⑥  $\frac{dE}{E}$  at SC-6Lh

SB\_0 98.0° → 87.5°  
 1 " " "  
 2 " " "  
 3 " " "  
 4 " " "

SC-GL-H



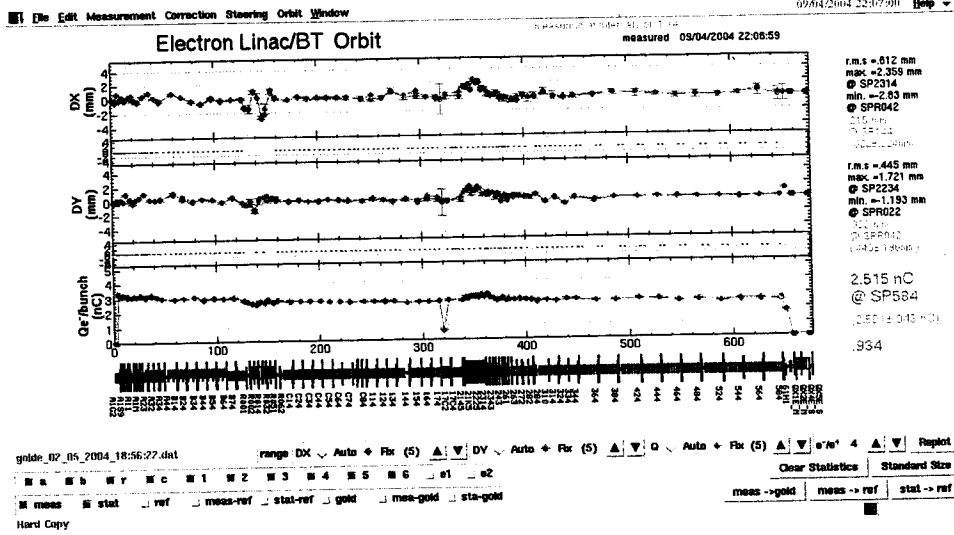
① 軌道補正 5-sector end 打

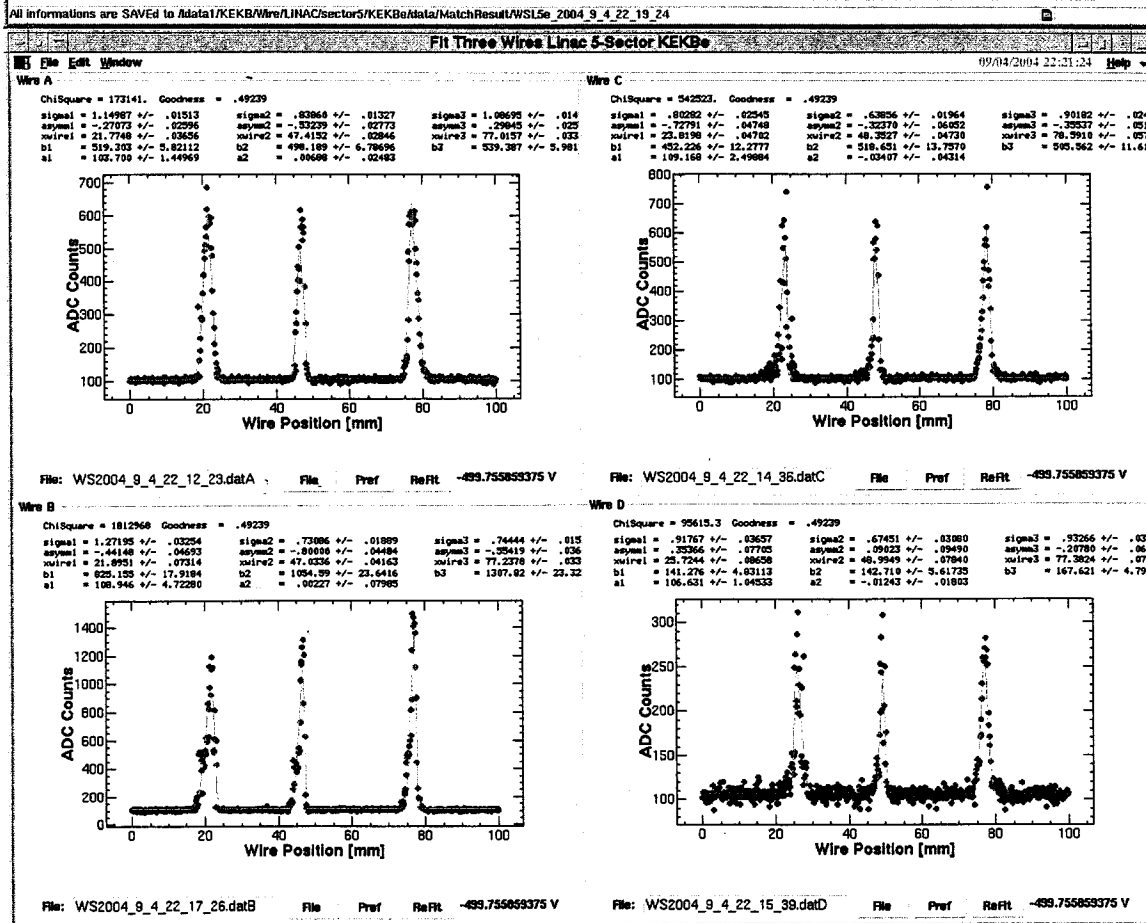
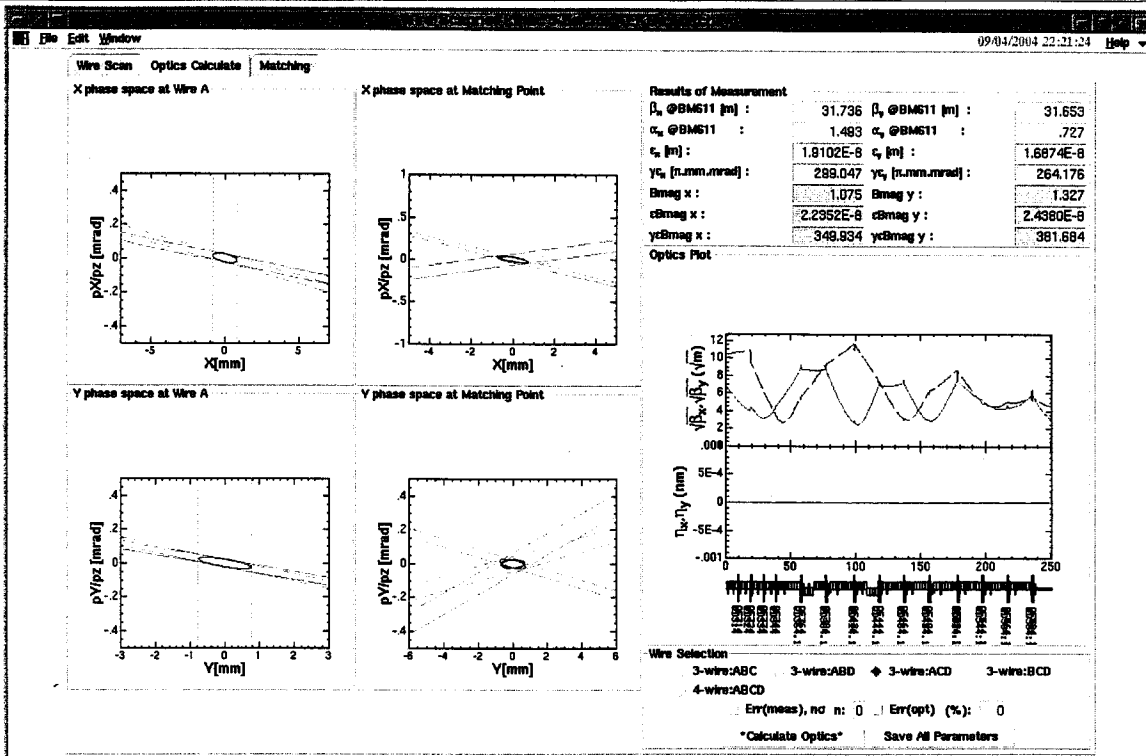
② SC-GLA3 on spot 位置

BS-GLA3 -8.164 → 0  
 BS-GLA2  
 QF-A-A 8.368 → 8.786  
 → 8.222  
 QD-GL-A1 8.000 → 8.530  
 achromatic 1=打 QF-GL-A1 → 8.906

22:08

W  
W





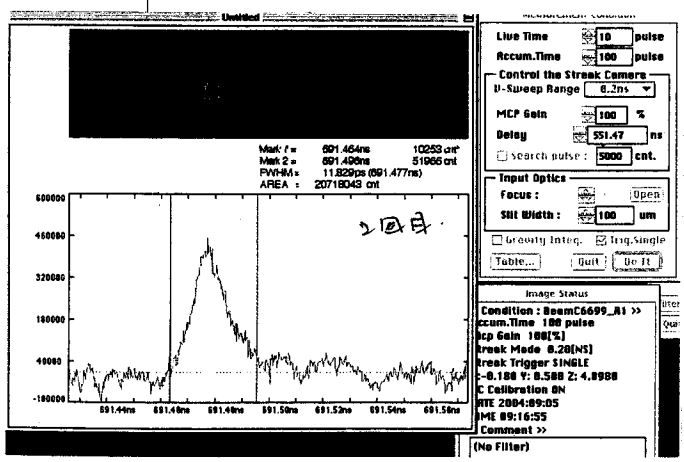
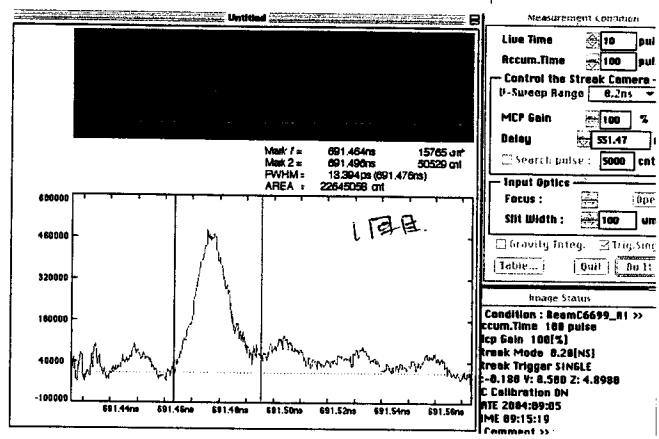
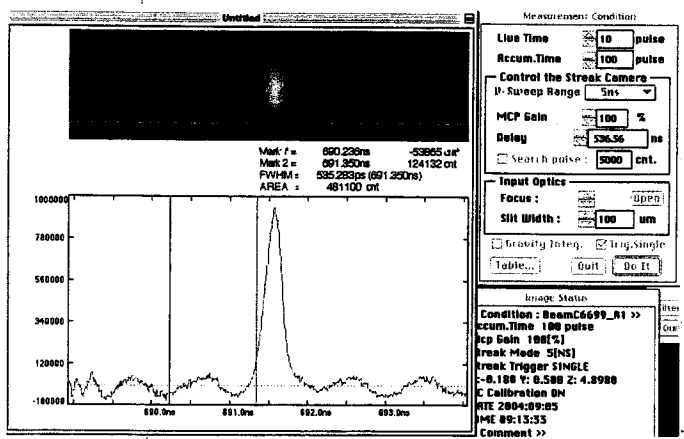
9/5 (日)

9-12 和子=9" の調整開始.

5Hz 2uc の

1000 程度

150回 掃査は overflow あり. → 1000回 程度



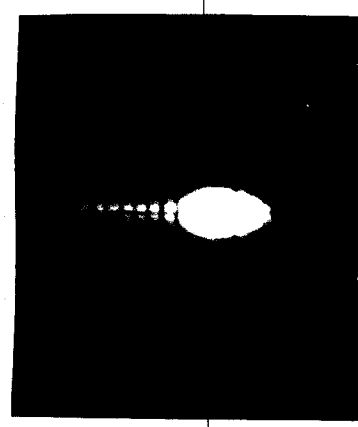
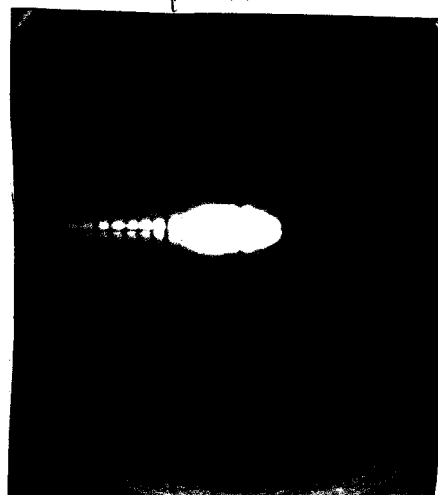
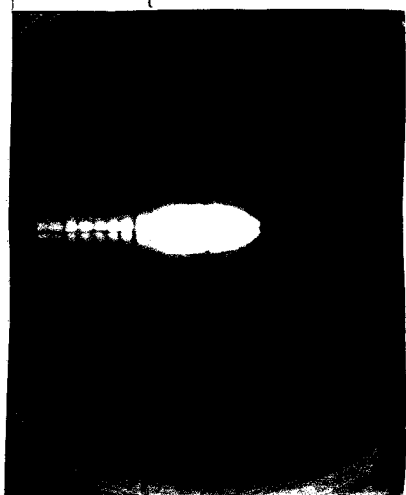
Beam Rep 2/3 の調整

SC-R0-3.1  
 $\phi = 92^\circ$

Energy Spread 調整  
 $\phi = 91.5$

SB A/B  $\phi$

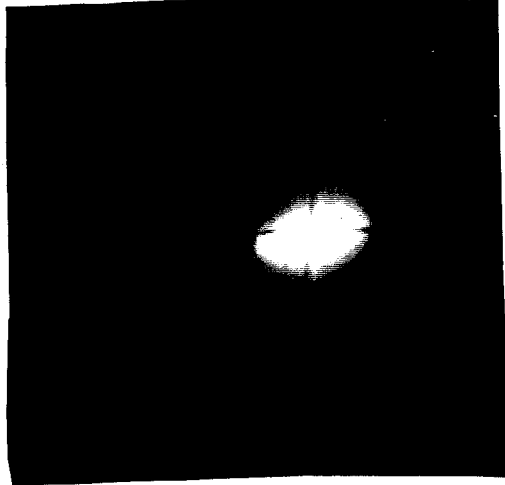
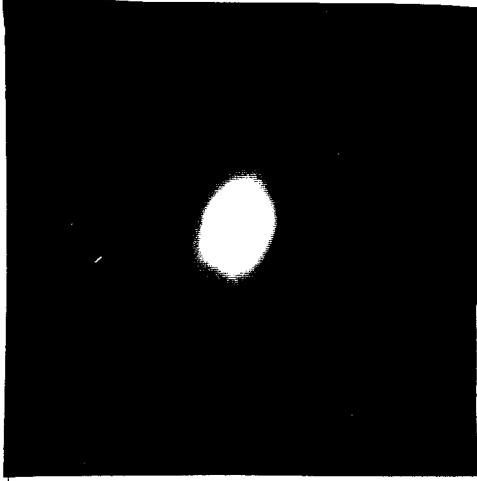
$\phi = 91.0$



SC-61-H

SC-61-A1

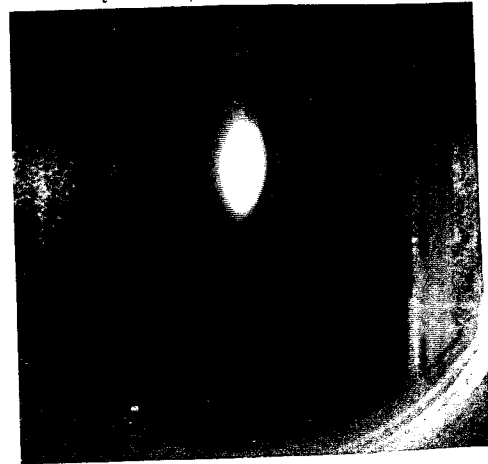
Rep 25Hz.



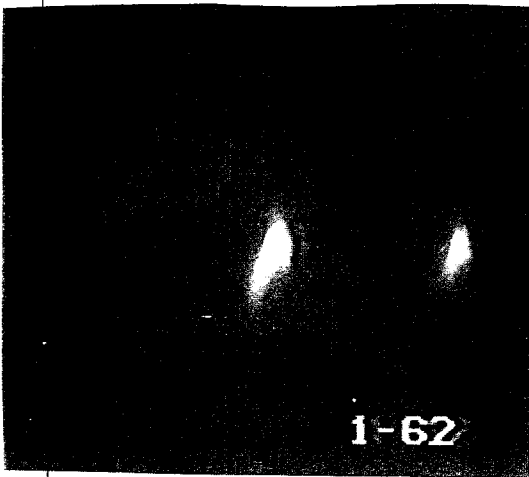
SC-61-A2



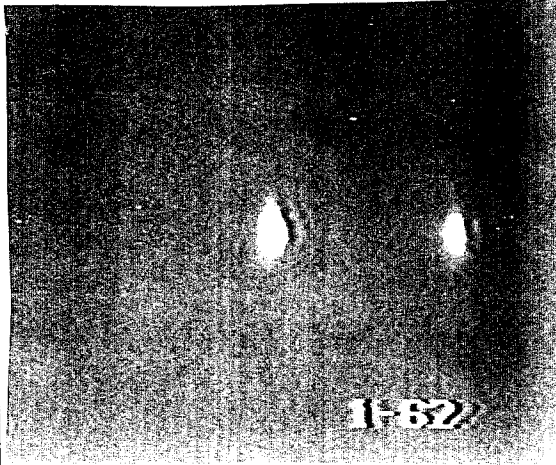
SC-61-A3



SC-61-A4



PB C.1 ~ 4  $\phi = 27.5 \rightarrow 21.8^\circ$   $\odot$  SC-61-A4



Energy level @ 5227 -  
Energy Dispersion @ 23%  
1-2 ~ 2.2 ~ 7.5

結局 @ 12 月 28 日  $\phi = 0$   
PB  $\phi$  20 0 8 2 7 2 0

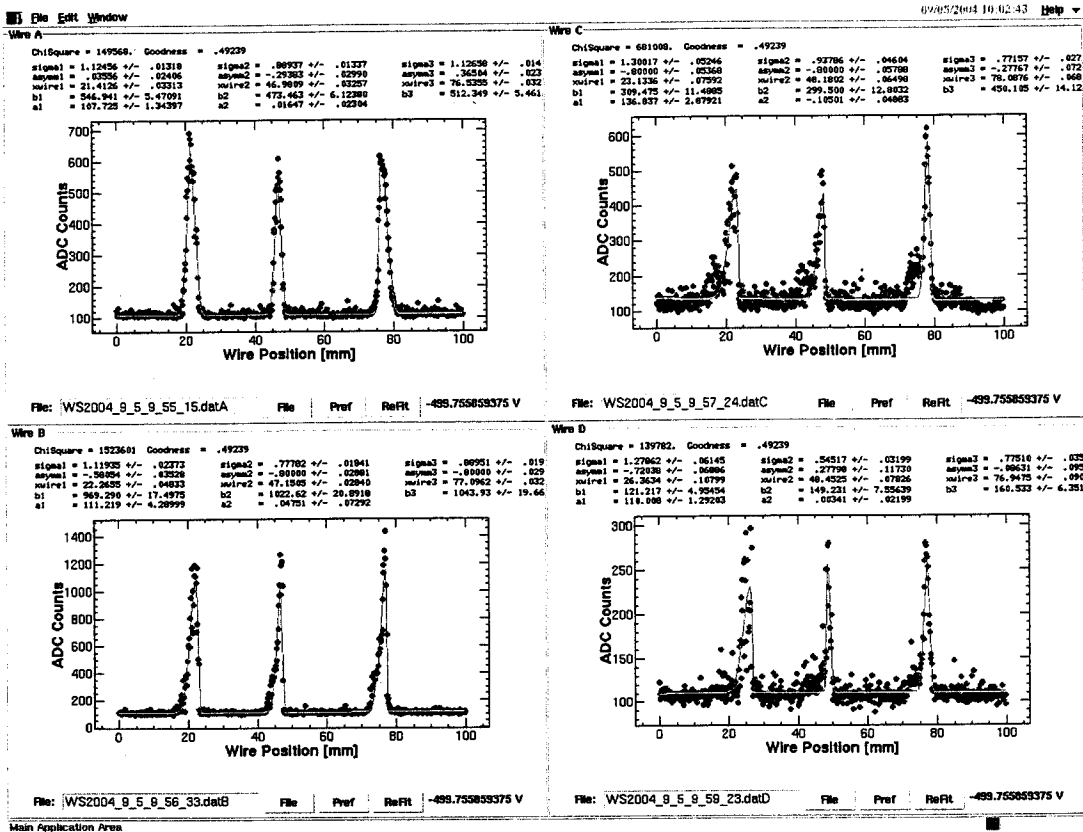
9-253

画像処理終了。

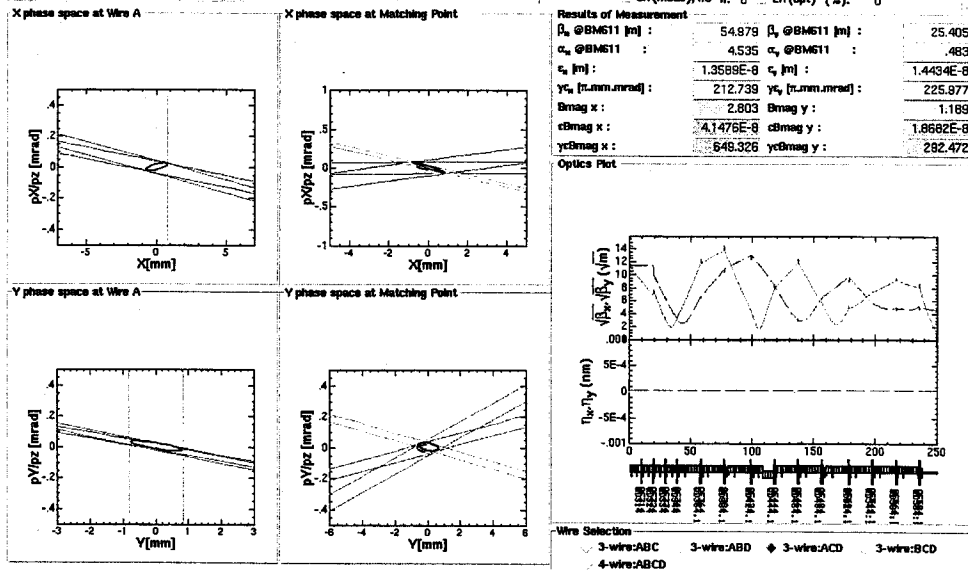
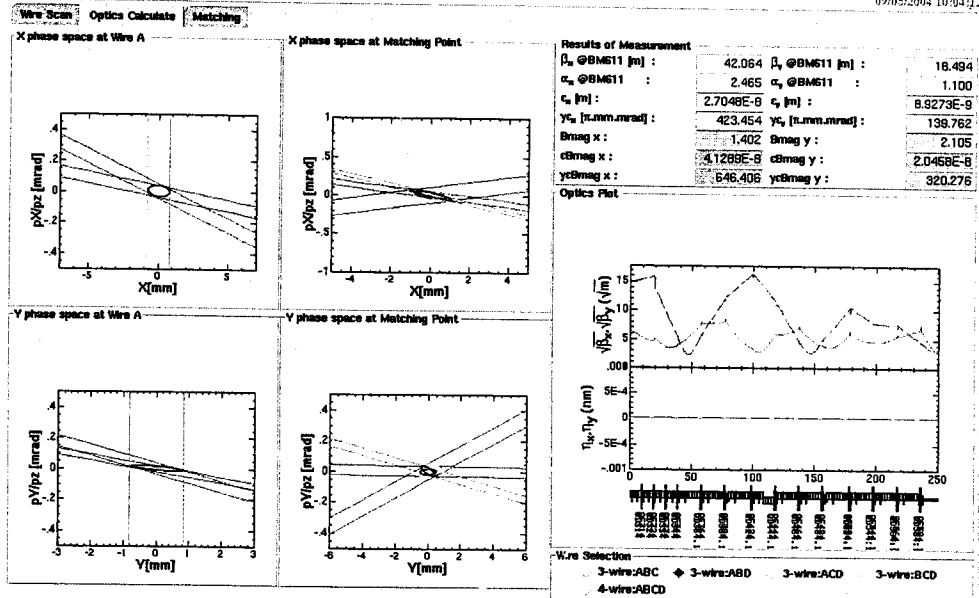
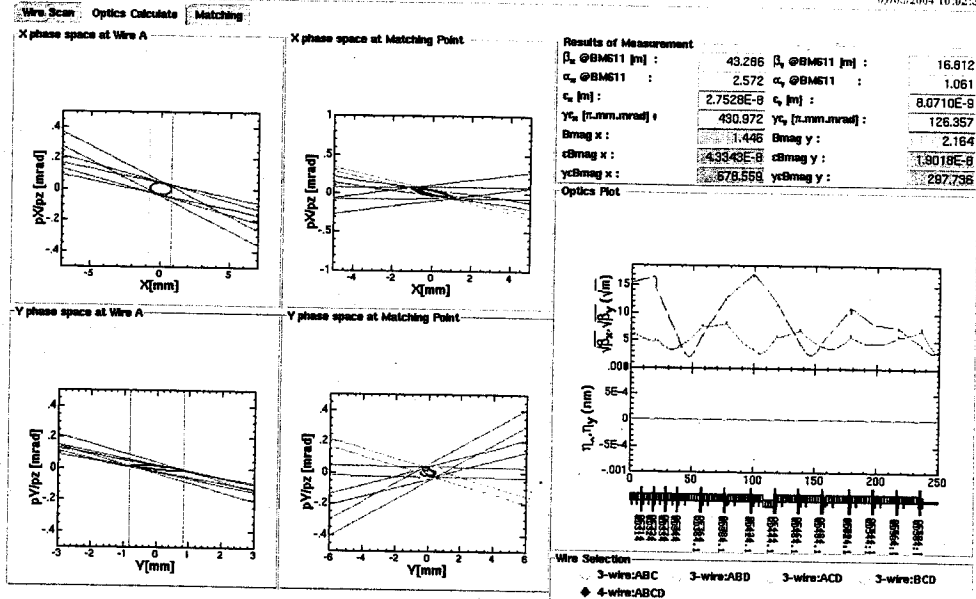
径 1.29 mm 径 2.35 mm  $\odot$  / 142

9-257

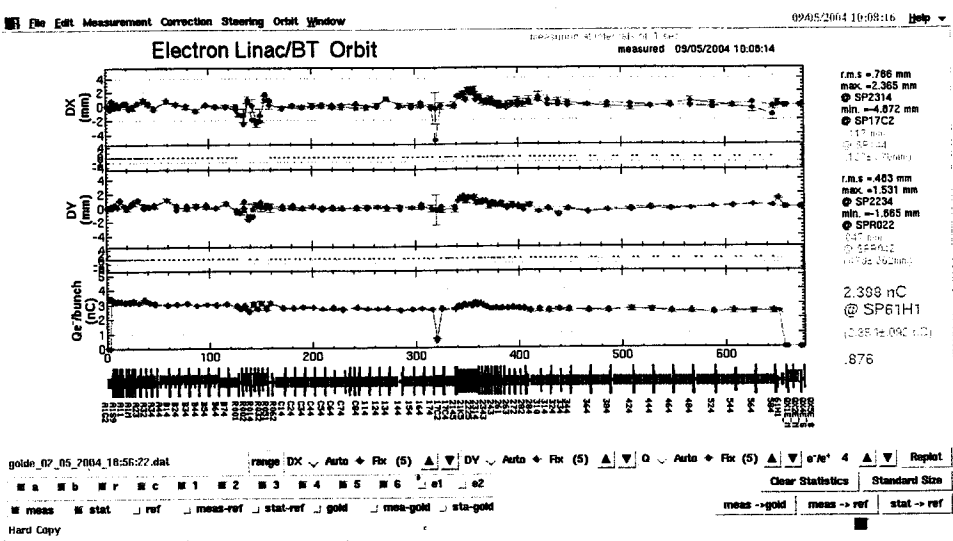
Wire 測定 @ 5077 - 7702 1317 再測り。





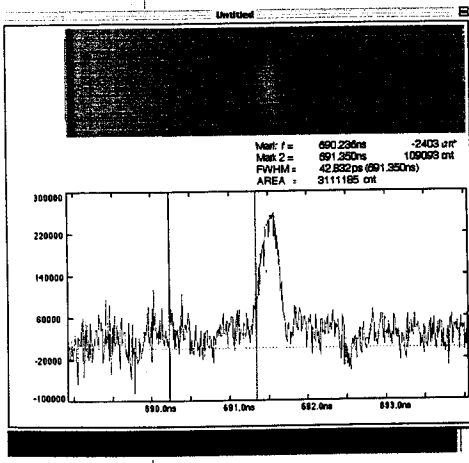


10=08  
最終軌道

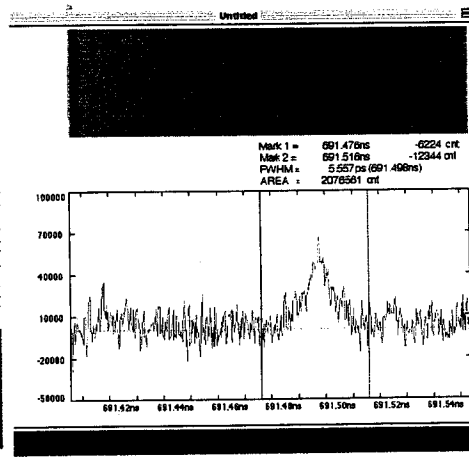


18=43

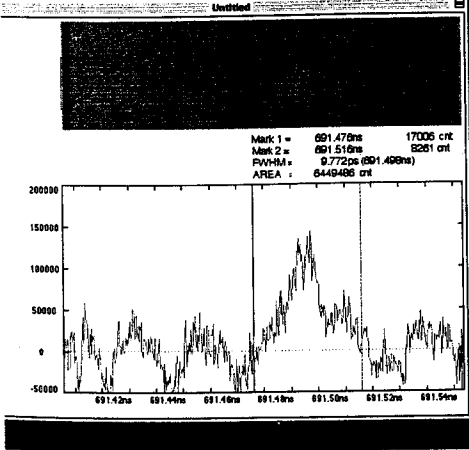
0.2nc beam 調整  
A1 stroke



Live Time 10 pulse  
 Accum.Time 150 pulse  
 Control the Streak Camera  
 U-Sweep Range 5ns  
 MCP Gain 100 %  
 Delay 536.56 ns  
 Search pulse: 5000 cnt.  
 Input Optics  
 Focus: (Open)  
 Slit Width: 100 um  
 Image Status  
 Condition: BeamC6699\_R1 >>  
 Accum.Time 150 pulse  
 Mcp Gain 100[%]  
 Streak Mode 5[NS]  
 Streak Trigger SINGLE  
 K=0.188 V: 0.508 Z: 4.8988  
 DC Calibration ON  
 DATE 2004-09-05  
 TIME 10:06:29  
 Comment >>  
 (No Filter)



Live Time 10 pulse  
 Accum.Time 150 pulse  
 Control the Streak Camera  
 U-Sweep Range 0.2  
 MCP Gain 100 %  
 Delay 551.4 ns  
 Search pulse: 500  
 Input Optics  
 Focus: (Open)  
 Slit Width: 100 um  
 Image Status  
 Condition: BeamC66  
 Accum.Time 150 frame  
 Mcp Gain 100[%]  
 Streak Mode 0.20[NS]  
 Streak Trigger CONTINU  
 K=0.188 V: 0.508 Z: 4.8988  
 DC Calibration ON  
 DATE 2004-09-05  
 TIME 19:03:59  
 Comment >>  
 (No Filter)



Live Time 10 pulse  
 Accum.Time 150 pulse  
 Control the Streak Camera  
 U-Sweep Range 0.2ns  
 MCP Gain 100 %  
 Delay 551.45 ns  
 Search pulse: 5000 cnt.  
 Input Optics  
 Focus: (Open)  
 Slit Width: 100 um  
 Image Status  
 Condition: BeamC6699\_R1 >>  
 Accum.Time 150 pulse  
 Mcp Gain 100[%]  
 Streak Mode 0.20[NS]  
 Streak Trigger SINGLE  
 K=0.188 V: 0.508 Z: 4.8988  
 DC Calibration ON  
 DATE 2004-09-05  
 TIME 19:08:31  
 Comment >>  
 (No Filter)